

SHAANKI INTERNATIONAL TRUST CO., LTD.



2011 ANNUAL REPORT

2

4

5

7

8

14

20

21

33

33

38

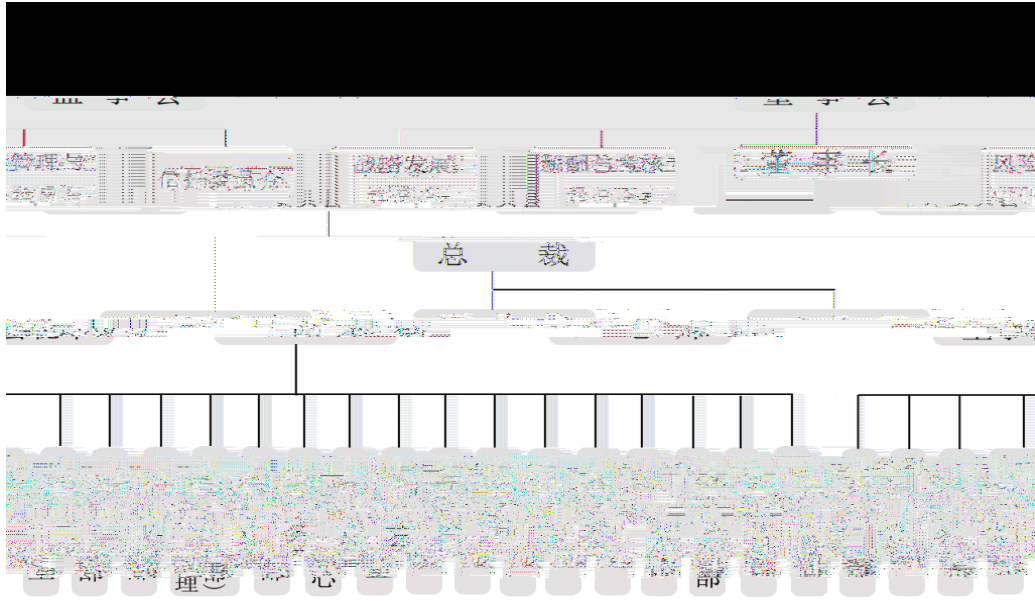
46

47

1			2001	1984	11	1992	1994
8							2008
7		5.78	1994			11,460.8	1994
1999	6	13,753.0	1997	12		17,454.8	
					31,418.7	2006	7
					35,841.3	2012	4
		57,841.3					

Shaanxi International Trust Co., Ltd.

SITC



2011

2010

2009

43,649,854.80

2011

2010

2009

0.67

-21.39

14.36

			0.00	

2011

2010

2009

2011

2010

2009

14.49

1
2
3

4

1. 3 2011 6 28

2

3.

2011 12 31

1. 10

2011

40, 910

39, 567

10

44. 34% 158, 935, 937 0 0

3. 10% 11, 124, 101 0 0

1. 51% 5, 400, 000 0 0

1. 17% 4, 200, 000

	10
	10

2

1.

"

"

2.

3.

2001 6 16

4.

62311022-2

5.

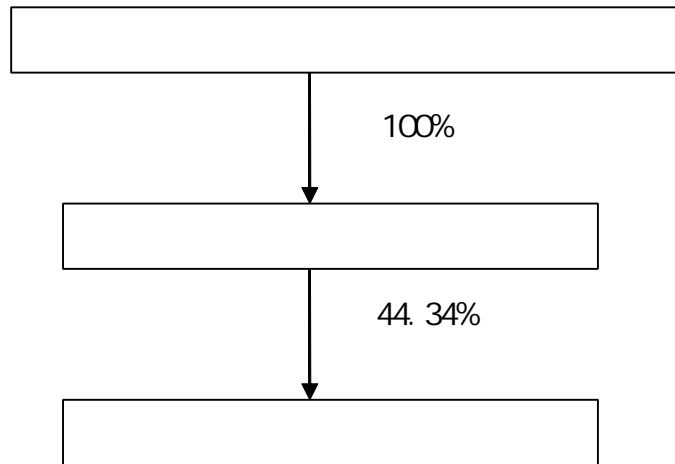
6.

428

7.

1.

2.



3.

10%

10%

10%

51	2009	07	27	2012	07	27	0	0	77.15
55	2009	07	27	2012	07	27	0	0	62.57
48	2009	07	27	2012	07	27	0	0	61.37

49 2009 07 27

2 2011 5 27

	92
	141

" "

1.

2

3.

4.

5.

6.

7.

1

2

3

" "

1.

9

2

- 1 2010
- 2 2010
- 3
- 4
- 5
- 6
- 7
- 8
- 9 2011

3.

4.

5. 2011

2011

2011 12 30

1

2012 4 6

2

2011

2011

2011

5

2

3

4

5

6

1.

2

3

4.

2012

1.

2

3

4.

1.

,

2011

2012

3 31

2

2011

		9.
--	--	----

5
"

"

90

"

"

" " " " " "

1.

			%	%	%	

304, 422, 023. 04
- 15, 382, 017. 15

96, 318, 272. 05

2

1

304,422,023.04

	789	2	787	39,350
	4,814	2,384	2,430	102

					6. 2010 7. 2010 8. 2011 9. 2011 2010 10. 2010 11. 2010 12. 2010 13. 2010 2010 2010 2010		
2		2011 2 20	2011 2 24				2011 2 25
3		2011 3 9	2011 3 11		1. 2. 2011 1		2011 3 12
4		2011 4 25	2011 4 29		2011		2011 4 30

5	2011	2011	1.		2011
	5	5			5 28
	23	27	2.		

3. " "

6	2011	2011			
	7	7			
	7	11 11			

					9.		
					10.		
					11.		
					12	2011	2
7		2011 8 19	2011 8 23		2011		2011 8 24
8		2011 10 13	2011 10 18		2011		2011 10 19
9		2011 11 21	2011 11 24				2011 11 25

1
7 11

8 30 2705

1 2011

2011

2011 10 17

9. 30 2705

2 2011

2
14 14:00 2705 2701 2701 2701 2011 6
[2012] 51
2011 9 19 14:30 2701 2 2011

2012

2011

2011

2011

2011

2011

1 2010

2011 2 9

2010

2010

2010

358,413,026

10 0.50

10

0.45

2011 4 1

2011 4

6

" 2010

"

2011 3 29

www.cninfo.com.cn

2

2011 7 28

2011 2

"

"

1

2

3

4

5

6

7
 2012 3 15 3 16 12
 [2012] 316
 [2012] 317
 2012 4 24
 23 7 29 10 18 2012 1 12 2011 7 12 7
 24 3 16 3 20 4
 2011
 164, 707, 193. 85
 5% 10%
 57, 841. 30 10 0. 6

			%	
2008	10, 752, 390. 78	75, 182, 348. 67	14. 3	46, 880, 845. 51
2009	17, 920, 651. 30	54, 845, 614. 33	32. 7	46, 618, 772. 18
2010	17, 920, 651. 30	65, 834, 063. 12	27. 22	55, 958, 953. 65
%	71. 36%			

2010

2011

2011

2011 1 17 2705
 2010 2010 2010 2010
 2010 2010 2010
 2011 2011
 2010 2010
 2010 2010

2011 3 11 2705
 2011 1

2011 4 29 2011

2011 7 11 2705

<

>

2011 8 29 2011

2011 10 18 2011
 2011

3 9 22 1
 4

2011

7.

1 2011 4 18
10

2 2011 7 4

2

3

4

5

6

1.

2

2012

3

4.

5

"

"

"

"

"

'

"

1

2011

1.
2
3.
4.
5.
6
1.

1

1

2

3

4

5

6

2

1

2

3

4

5

3

1

2

3

4

4

"

"

136,368,773.12
126,834,871.68

9,533,901.44

12,650

"

"

"

"

"

"

5%

		" "	
		" "	

5%

40

19

[2010] 169

2012 2

2012

2011 6 21 -6 23 11 15 -11 16

2011 12 15

2011

2011 12 26

2012 1 8

2012 1 13

2011
2011

62

1 —

	---2011 1 ---2011	[2011-15]		
9	---	[2011-16]	3. 30	
10	---2011	[2011-17]	4. 13	
11	---	[2011-18]	4. 29	
12	---2011 ---2011	[2011-19]	4. 30	
13	---	[2011-20]	5. 28	
14	---	[2011-21]	5. 31	
15	---	[2011-22]	6. 28	
16	---	[2011-23]	7. 5	
17	--- ---2011 --- --- --- --- 2011 2 --- ---	[2011-24] [2011-25] [2011-26] [2011-27]	7. 12	
18	--- 2011 2 [2011-25] --- [2011-30]		7. 23	
19	---2011 2 ---2011	[2011-28]	7. 29	
20	---	[2011-29]	8. 5	
21	---	[2011-31]	8. 18	
22	---2011 ---2011 ---	[2011-32]	8. 24	
23	---	[2011-33]	10. 18	
24	---2011 ---2011	[2011-34]	10. 19	
25	---	[2011-36]	11. 25	

" _"

" _"

" _"

" _"

:

:

" _"

£ 9ù î ê k19.2(L)19.2(q 1 0 0 1 2176 3

:

"_"

- 1
- 2
- 3

			:				
" _ "							
1							
2							
3							
1							
2							
3							
4							
1							
2							
3							
4							
1							
2							

2011 12 31

388,126,449.23

94,288,119.77

30,001,682.23

39,407,134.22

244,362,255.38

244,362,255.38

244,362,255.38

244,362,255.38

131,308,146.05

15,808,146.05

34,448,276.52

19,448,276.52

131,308,146.05

15,808,146.05

34,448,276.52

19,448,276.52

131,308,146.05

34,448,276.52

/ 15,808,146.05 / 19,448,276.52

83,358,669.04

142,736,839.21

356,620,000.00 356,620,000.00 216,010,000.00 216,010,000.00

356,620,000.00

4

48,224,970.53

48,224,970.53

/

44,724,245.35 14,299,152.21 4,947,796.90 54,075,600.66

1	<hr/>	<hr/>	<hr/>	<hr/>	<hr/>
		1,762,800.00	/	/	1,762,800.00
2		318,973.66	176,280.00	/	495,253.66
3		/	/	/	/

30,122,743.47 56,386,949.63 54,164,528.43 32,345,164.67

39,525,697.77

39,041,805.21

56,235,985.08

68,141,976.48

304,422,023.04

220,169,096.67

10,116.31

878,838.65

48,135,894.61

23,842,973.65

212,300,000.00

99,000,000.00

121,000,000.00

100,023,858.70

75,820,463.89

2011 10 17

[2011] 426

358, 413, 026

578, 413, 026

1

200, 000, 000

34. 58%

20, 000, 000

3. 46%

22, 000

2012 4 11

1. 00

9. 65

2, 105, 130, 000. 00

2012 4 11

[2012] 001

578, 413, 026. 00

2012 4 12

[2012] 002

2012 4 24

2012 4 26

2011

10%

5%

2011

2011 12 31

:

:

50,479,91e ,425
Σ: 5 0

632]

2011

" - ")

" - ")

			%

	155	4,168,221.62

)	()

TOT)

()	()	()

2006 2 15 ---
 1 --- 38 ---

	%